

**Briggs,
Fyvie, Turriff, AB53 8NR**

**Price Over
£60,000**

ASPC ref : 337424



Arrange a viewing

 **01224 452750**
(Blackadders)

Blackadders

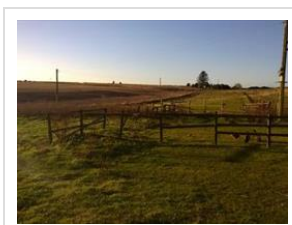
37 Langstane Place
Aberdeen
AB11 6EN

Email:

property@blackadders.co.uk

Website:

http://www.blackadders.co.uk



Property features:

Conversion of Steading to form a **THREE BEDROOM** Dwellinghouse at Steading at Briggs Farm in the small Hamlet of Millbex, 2 miles from the village of Fyvie which lies 7 miles south-east of Turriff and just 25 miles north of Aberdeen.

The site enjoys a super open outlook to the rear over the surrounding farmland. Local attractions include Fyvie Castle to the north of the village; fishing, golfing, bowling and a great location for those who love to walk and cycle.

Schooling can be found at Fyvie Primary and Turriff Academy.

Directions: From Aberdeen drive towards Dyce, continue along the A947 through Newmacher and Oldmeldrum to Fyvie. On reaching Fyvie continue past the monument and primary school for 4 miles. Turn tight at signpost for " Upperton". Continue past Upperton Farm, Briggs Steading is the 2nd farm track on the left.

View this property on aspc.co.uk:

<https://www.aspc.co.uk/search/property/337424/Briggs/Turriff/>

01224 632949). Whilst the particulars have been prepared with care and are believed to be accurate, no liability for any errors or omissions therein or the consequences thereof will be accepted by the Selling Solicitors or Aberdeen Solicitors' Property Centre Ltd. © Aberdeen Solicitors' Property Centre and Selling Solicitors.